



**PAWAN**  
**BIOSCIENTIFIC ENGINEERING SERVICES (PBES)**

Kathmandu ,Nepal +977-9851246174/9841464697 ,Email:- pawanbioscientific@gmail.com

Regd. No. 17782/833/074/075  
NEC Regd. No. '604' E&C

# **PBES PROFILE**

**PAWAN BIOSCIENTIFIC ENGINEERING SERVICES**

**ISO 9001:2015 Certified**

**NABL Accredated Services(Globally Accepted)**

**Kathmandu office:**

**Anamnagar ,Near Bigmart /Music Nepal office.**

**Kathmandu ,Nepal.**

**Mob:- +977-9851246174 / 9841464697**

**Office :- 01-4102553**

**Email:- pawanbioscientific@gmail.com**

**Website:- www.pbesnepal.com**



# **PAWAN**

## **BIOSCIENTIFIC ENGINEERING SERVICES (PBES)**

Kathmandu ,Nepal +977-9851246174/9841464697 ,Email:- pawanbioscientific@gmail.com

Regd. No. 17782/833/074/075  
NEC Regd. No. '604' E&C

**ISO 9001:2015 CERTIFIED /NABL ACCREDITED SERVICES**

## **INTRODUCTION TO THE PBES**

Established in 2017 by **Asst. Prof. Er.Pawan Kumar Karna** (College of **Biomedical Engineering and Applied Science ,Kathmandu ,Nepal**) to provide engineering support and services of biomedical and lab equipment as well as scientific equipment's. Biomedical and Scientific Instrument assume significant proportion in facilitating and promoting better health care services in Hospitals, Nursing Homes, Pathological Labs, and conducting research studies in biomedical and scientific fields . They provide more reliable and valid information enabling the users to work more effectively and efficiently. Biomedical and Scientific instrumentation market is growing in Nepal due to rapid increase in number of Hospitals, Polyclinics, Medical Colleges, Research Labs and Research Units. Biomedical and Scientific equipment's are however imported in Nepal. Nepal does not have its own production in this field so far.

We are providing technical support for instrument operation, safety handling ,product inspection, quality test, providing servicing and maintenance support i.e., (corrective ,preventive as well as emergency maintenance management of Instruments) after sales services, technical report preparation , monitoring the performance , quality of service, team work , dealing with vendors for timely supply of spare parts for effective maintenance management, coordinate with sales and service team to ensure proper customer service, Hospital Lab, Scientific Lab design and setup ,Annual Maintenance Contract (AMC) services, Hospital and lab Hepa Filter System Design ,Supply , Installation, Maintenance, Validation ,Calibration etc.



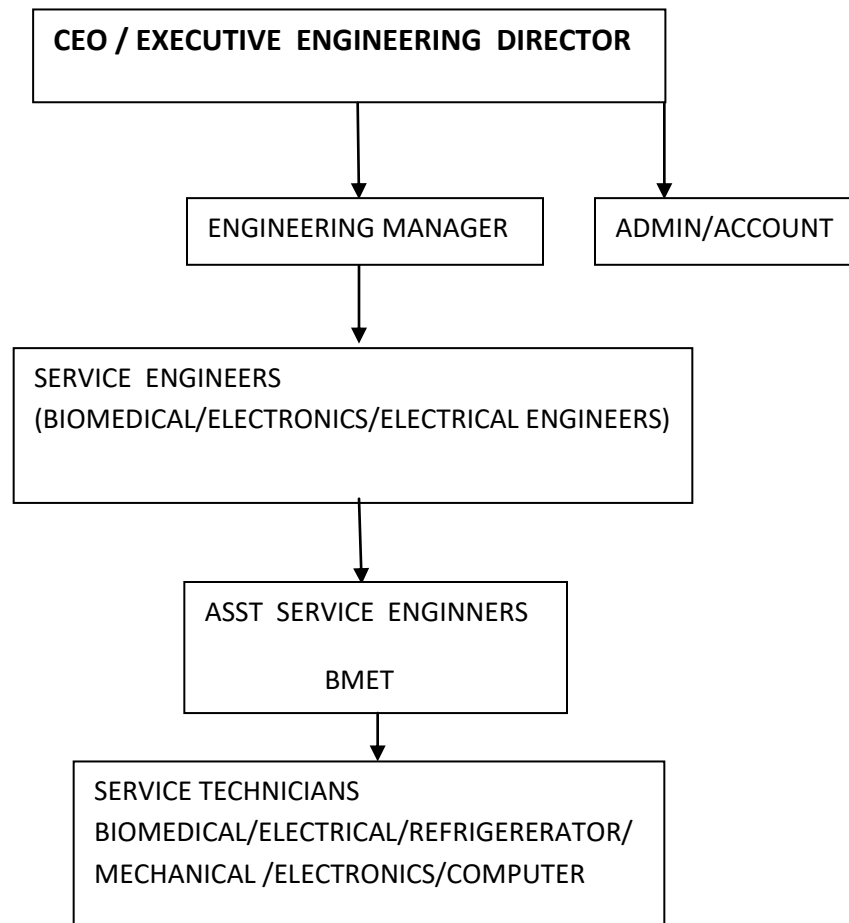
# PAWAN BIOSCIENTIFIC ENGINEERING SERVICES (PBES)

Kathmandu ,Nepal +977-9851246174/9841464697 ,Email:- pawanbioscientific@gmail.com

Regd. No. 17782/833/074/075  
NEC Regd. No. '604' E&C

**ISO 9001:2015 CERTIFIED /NABL ACCREDITED SERVICES**

## PBES ORGANIZATION CHART





# **PAWAN**

## **BIOSCIENTIFIC ENGINEERING SERVICES (PBES)**

Kathmandu ,Nepal +977-9851246174/9841464697 ,Email:- pawanbioscientific@gmail.com

Regd. No. 17782/833/074/075  
NEC Regd. No. '604' E&C

**ISO 9001:2015 CERTIFIED /NABL ACCREDITED SERVICES**

## **COMPANY VISION**

### **Mission**

Understanding the client's needs for the meticulous solution is our main focus. Our main mission is to provide engineering support and services for biomedical and scientific instrument operation, safety handling, product inspection, quality test, providing servicing and maintenance support i.e., (corrective, preventive as well as emergency maintenance management of Instruments).

### **Vision**

Becoming a leading company to provide best engineering support and services.

## **Critical Success Factor**

Reason behind our success are:

- Trained engineers from more than 45 manufacturers from 8 countries .
- Emergency services for breakdown maintenance support and services.
- Minor and most usable spare parts in stock for emergency support .
- Warranty for the spare parts used.
- Online helps and supports.
- Customer Relation.
- Advertisement and Promotions.



# PAWAN BIOSCIENTIFIC ENGINEERING SERVICES (PBES)

Kathmandu ,Nepal +977-9851246174/9841464697 ,Email:- pawanbioscientific@gmail.com

Regd. No. 17782/833/074/075  
NEC Regd. No. '604' E&C

## ISO 9001:2015 CERTIFIED /NABL ACCREDITED SERVICES

### BUSINESS PROFILE

- Pawan Bioscientific Engineering Services abbreviated as PBES , complete Biomedical and Scientific Engineering Support and Services.
- PBES Provides **Engineering Support and Services**
- PBES Provides services for **Lab Design**.
- PBES Provides services for **Lab Setup**.
- PBES Provides services for installation of biomedical and scientific lab instruments.
- PBES Provides services for **maintenance of all kinds of biomedical and scientific lab instruments**.
- PBES Provides annual maintenance contract (**AMC**) services for biomedical and scientific lab instruments.
- PBES Provides **NABL Accredited Calibration and Validation Services** of biomedical and scientific lab instruments.
- PBES Provides **Certification and Performance Validation** of instruments.
- **ISO Certification** of all kinds of Hospital and Research Labs
- We have fully satisfied clients ranging from lab , scientific lab ,research lab ,hospitals ,pharmaceuticals ,microbiology ,forensic labs.
- **Hepa Filtration System +ve pressure and –ve pressure design ,AHU hepa filtration unit supply ,installation , maintenance ,validation and calibration as per WHO,NSF49,ISO14644 guidelines**.
- PBES is also complete solution for Lab Design , Lab Setup, Installation ,Servicing and maintenance ,Internal Calibration ,Performance Validation and all kinds of engineering services.
- PBES have well skilled and trained Biomedical /Electrical/Electronics Engineers.



# **PAWAN**

## **BIOSCIENTIFIC ENGINEERING SERVICES (PBES)**

Kathmandu ,Nepal +977-9851246174/9841464697 ,Email:- pawanbioscientific@gmail.com

Regd. No. 17782/833/074/075  
NEC Regd. No. '604' E&C

**ISO 9001:2015 CERTIFIED /NABL ACCREDITED SERVICES**

## **LIST OF OUR PRIVILEGED CUSTOMER**

### **Governmental Bodies**

- 1) Nepal Agriculture Research Council (NAARC).
- 2) Nepal Academy of Science and Technology(NAST).
- 3) Nation Police Forensic Science Lab ,Kathmandu.
- 4) National Forensic Science Lab Khumaltar , Lalitpur.
- 5) National Soil and Fertilizer Testing Lab Hariharbhawan Lalitpur.
- 6) Department of Environmental Science Lab/Ministry of Environtal Lab.
- 7) Department of Botany ,Thapathali.
- 8) Rabbies Vaccine Production Lab.
- 9) Nepal Red Cross Blood Bank , Kathmandu Nepal.
- 10) Veterinary Lab , Budhanilkantha ,Kathmandu.
- 11) Department of Mines and Geology.
- 12) Veterinary Standards and Drug Regulatory Laboratory Budhanilkantha Kathmandu.
- 13) Banaspati Bhivag Thapathali Kathmandu.
- 14) National Vaccine Production Laboratory Tripureshwor Kathmandu.
- 15) Nepal Agriculture Research Council Plant Pathology Division
- 16) Nepal Agriculture Research Council Entomology Division
- 17) Nepal Agriculture Research Council Gene Bank
- 18) Nepal Agriculture Research Council Food Technology Division
- 19) Nepal Agriculture Research Council Animal Breeding
- 20) Nepal Agriculture Research Council Plant Pathology Division
- 21) Nepal Agriculture Research Council Department of Biotechnolgy
- 22) Nepal Agriculture Research Council Seed Division



# **PAWAN BIOSCIENTIFIC ENGINEERING SERVICES (PBES)**

Kathmandu ,Nepal +977-9851246174/9841464697 ,Email:- pawanbioscientific@gmail.com

Regd. No. 17782/833/074/075  
NEC Regd. No. '604' E&C

## **ISO 9001:2015 CERTIFIED /NABL ACCREDITED SERVICES**

### **Universities and Colleges**

- 1) **Kathmandu University Department of Biotechnology/AEC.**
- 2) **Tribhuban University Central Department of**
  - a) **Microbiology.**
  - b) **Chemistry.**
  - c) **Biotechnology.**
  - d) **Zoology.**
  - e) **Environmental Science .**
  - f) **RECAST**
- 3) **CIST College Baneshwor, Kathmandu.**
- 4) **NIST College Nayabazar, Kathamndu.**
- 5) **HICAST College ,Kirtipur, Kathmandu.**
- 6) **Vally College , Sitapaila ,Kathamndu.**
- 7) **Amrit Science Campus.**
- 8) **Trichandra Multiple Campus , Ghantaghar ,Kathmandu.**
- 9) **Kantipur College ,Kathmandu.**
- 10) **College of Biomedical Engineering,Kathmandu.**
- 11) **Little Buddha College Baneshwor Kathamndu.**
- 12) **SAAN College Lab ,Kathmandu.**





# **PAWAN**

## **BIOSCIENTIFIC ENGINEERING SERVICES (PBES)**

Kathmandu ,Nepal +977-9851246174/9841464697 ,Email:- pawanbioscientific@gmail.com

Regd. No. 17782/833/074/075  
NEC Regd. No. '604' E&C

### **ISO 9001:2015 CERTIFIED /NABL ACCREDITED SERVICES**

#### **Hospitals and Labs**

- 1) Om hospital (IVF Lab).
- 2) Annapurna neuro hospital Maitighar ,Kathmandu ,Nepal.
- 3) Lalitpur Mental Hospital.
- 4) All Nepal Hospital Gangabu, Kathmandu ,Nepal.
- 5) TU Teaching Hospital ,Blood Bank ,Pathology Lab ,Basic Science lab.
- 6) Bir Hospital Pathology Lab.
- 7) Dhulikhel Hospital Pathology Lab.
- 8) Alka Hospital.
- 9) Sahid Ganga Lal National Heart Centre Pathology lab.
- 10) Infertility Centre.
- 11) Vatsalya IVF Health Care Centre .
- 12) NRL Baneshwor Kathmandu.
- 13) Central Diagnostic Lab Kamalpokhari,Kathmandu.
- 14) All Nepal Hospital Gangabu ,Kathmandu.
- 15) ENPHO Lab
- 16) NESS Lab
- 17) Water Engineering Lab
- 18) ASTHA Lab
- 19) CMAT Lab
- 20) Central Vetnery Lab.
- 21) Kantipur Dental Hospital.
- 22) CMDN,Thpathali,Kathmandu.
- 23) INTREPID Nepal Research Lab ,Thapathali ,Kathmandu .
- 24) INTREPID Cancer Diagnostic and research Lab.
- 25) Biovac Nepal Banepa .
- 26) Little Buddha College Lab.
- 27) FICUS Lab, Kathmandu ,Budhanilkantha.
- 28) Shikhar Biotech Lab ,Khumaltar, Lalitpur.
- 29) Siddhi Polyclinic Dillibazar , Kathmandu.
- 30) CIST College Lab, New Baneshwor ,Kathmandu.
- 31) OM Buddha Poli clinic Kathmandu.
- 32) CEPRED Lalitpur Kathmandu .
- 33) Nepal Medical College Jorpati ,Kathmandu.
- 34) Nepal Korea Friendship Municipality Hospital Molecular Lab ,Bhaktapur.
- 35) Decode Genomics and Research Centre.
- 36) WARUN USAMD-AFRIMS/ C/O US Embassy Kathmandu Nepal.





# **PAWAN**

## **BIOSCIENTIFIC ENGINEERING SERVICES (PBES)**

Kathmandu ,Nepal +977-9851246174/9841464697 ,Email:- pawanbioscientific@gmail.com

Regd. No. 17782/833/074/075  
NEC Regd. No. '604' E&C

**ISO 9001:2015 CERTIFIED /NABL ACCREDITED SERVICES**

### **Biomedical and Lab Suppliers**

- 1) BTC Pvt Ltd Kupondole , Lalitpur .
- 2) Ranisati Trading Concern,Tripureshwor, Kathmandu.
- 3) Jai Shree Shyam Trading Concern Balkhu , Kathmandu.
- 4) Equichem Trading Concern ,Baneshwor, Kathmandu.
- 5) Albert Trading Concern ,Tripureshwor ,Kathmandu .
- 6) OM Surgical Suppliers Tripureshwor , Kathmandu.
- 7) Monashu Trading Concern, Kathmandu.
- 8) Deep Jyoti Traders, Tripureshwor , Kathmandu.
- 9) Bikash Sergical Suppliers, Tripureshwor, Kathmandu.
- 10) Helix Enterprises Pvt Ltd.
- 11) Shindhu surgical Thapathali Kathmandu.
- 12) Lab Line Traders Thapathali Kathamndu
- 13) SAKO Engineering Kathmandu.
- 14) Techno Controls Tripureshwor,Kathmandu.
- 15) Deep Jyoti Traders ,Tripureshwor ,Kathmandu.

### **PHARMACEUTICAL INDUSTRIES**

- 1) QMED Formulation Pvt Ltd Bhaktapur, Nepal.
- 2) Mark Furmulation Thankot,Kathmandu ,Nepal.
- 3) Quest Pharmaceuticals Simra ,Bara Nepal.
- 4) Lomus Pharmaceuticals ,Gothatar, Kathmandu Nepal.